



Flexible Fuel Storage Tanks

Collapsible Pillow Tanks and Bladders

MARS 

[Mars Fuel Storage Tanks](#) are flexible storage units equipped to store various types of fuel including diesel and Jet A. Perfect for use on mining sites, fracking sites, remote locations, disaster relief areas, and more to keep a supply of fuel on site.



Flexible Fuel Storage Tanks

Collapsible Pillow Tanks and Bladders

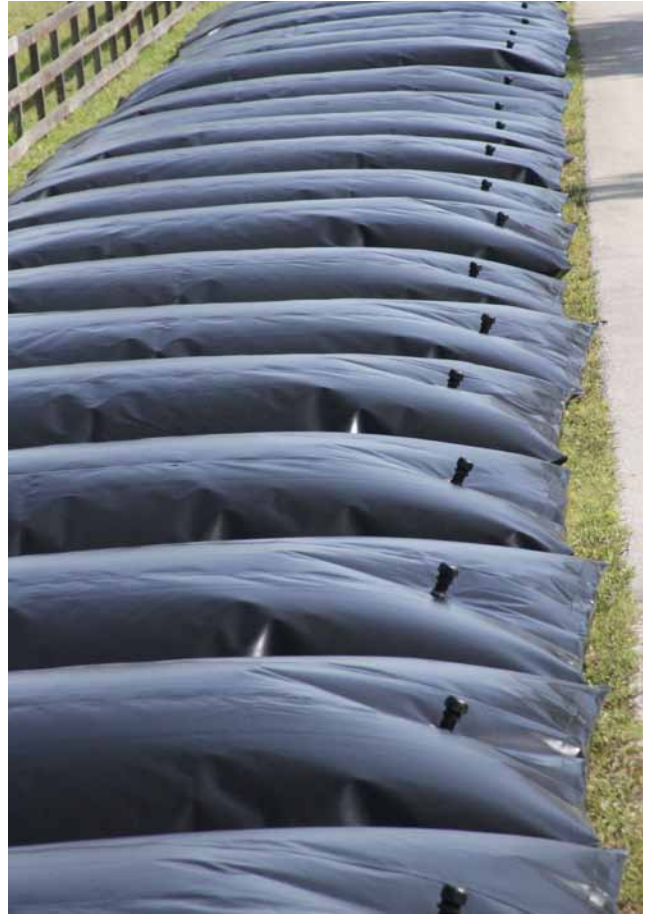
[MARS Flexible Fuel Tanks](#) provide economical, dependable fuel storage solutions from quick deployment in military operations to remote job site storage. Multiple sizes and fabric options are available making these tanks ideal for military, industrial facility, construction site or storage locations.

Fuel Tank Features

- Bulk Storage Options (25 gallons up to 210,000 gallons)
- Easy Installation (unfold and fill)
- Folds up for Storage or Transportation
- Ideal for Temporary or Short Term Storage Requirements
- Low Profile
- Extreme Temperature and UV exposure

Common Uses

- Applications in Oil, Gas & Mining Industry
- Remote Location Fuel Storage
- Disaster Relief Fuel Supply
- Aviation Fuel Storage
- Temporary Fuel Storage



All MARS fuel tanks are constructed with diesel compatible fabrics and industry leading state of the art radio frequency heat welding and vulcanizing techniques. Each MARS fuel storage tank undergoes a rigorous 4 point inspection before shipping.

Each MARS fuel tank comes with (2) 2" Bulkhead fittings for fill and discharge. Additional sizes and fitting types are available by request.

In addition to our fuel storage options, collapsible tanks are also available for the storage of water. Contact a specialist for details.

In order to quote on you on the right system for your location, we will need to know a couple of things regarding your storage needs including the type of fuel being stored in the tank, your storage location, and the required storage time for your project. To match the right fabric with your intended storage fuel, an MSDS (Material Safety Data Sheet) may be required to make sure we are quoting you on the best option for your location.

Flexible Fuel Storage Tanks

Specifications

Capacity US	Capacity Metric	Sizing US LxWxH	Sizing Metric LxWxH
25 gal	94 L	36" x 24" x 8"	0.90 m x 0.60 m x 0.20 m
50 gal	189 L	52" x 36" x 9"	1.3 m x 0.90 m x 0.23 m
75 gal	283 L	54" x 42" x 9"	1.37 m x 1.06 m x 0.23 m
100 gal	378 L	66" x 42" x 9"	1.68 m x 1.06 m x 0.23 m
150 gal	567 L	60" x 60" x 12"	1.50 m x 1.50 m x 0.30 m
200 gal	757 L	70" x 70" x 12"	2.10 m x 1.50 m x 0.36 m
250 gal	946 L	84" x 60" x 14"	2.10 m x 1.50 m x 0.36 m
275 gal	1,040 L	80" x 72" x 16"	1.80 m x 2.00 m x 0.40 m
300 gal	1,135 L	84" x 66" x 14"	2.10 m x 1.68 m x 0.36 m
500 gal	1,892 L	108" x 84" x 16"	2.75 m x 2.10 m x 0.40 m
600 gal	2,271 L	120" x 84" x 16"	3.00 m x 2.10 m x 0.40 m
700 gal	2,649 L	114" x 99" x 16"	2.90 m x 2.50 m x 0.40 m
800 gal	3,028 L	120" x 72" x 24"	1.80 m x 3.00 m x 0.60 m
900 gal	3,406 L	132" x 72" x 24"	1.80 m x 3.35 m x 0.60 m
1,000 gal	3,785 L	132" x 108" x 16"	3.35 m x 2.74 m x 0.40 m
1,500 gal	5,678 L	168" x 120" x 18"	4.27 m x 3.00 m x 0.46 m
2,000 gal	7,570 L	174" x 126" x 22"	4.40 m x 3.20 m x 0.56 m
2,500 gal	9,463 L	174" x 144" x 24"	4.40 m x 3.65 m x 0.60 m
3,000 gal	11,356 L	180" x 138" x 24"	4.57 m x 4.10 m x 0.60 m
4,000 gal	15,141 L	216" x 168" x 27"	5.50 m x 4.27 m x 0.70 m
5,000 gal	18,927 L	234" x 186" x 27"	5.94 m x 4.72 m x 0.70 m

Capacity US	Capacity Metric	Sizing US LxWxH	Sizing Metric LxWxH
5,500	20,820	20' x 17' x 2.25'	6.10 m x 5.20 m x 0.70 m
6,000	22,712	21' x 18' x 2.25'	6.40 m x 5.50 m x 0.70 m
6,500	24,605	20.8' x 18' x 2.5'	6.34 m x 5.50 m x 0.76 m
7,000	26,498	19' x 20' x 2.5'	5.80 m x 6.10 m x 0.76 m
7,500	28,391	20' x 20' x 2.5'	6.10 m x 6.10 m x 0.76 m
8,000	30,283	19' x 19' x 3'	5.80 m x 5.80 m x 0.90 m
9,000	34,069	20' x 21' x 3'	6.10 m x 6.40 m x 0.90 m
9,500	35,961	21' x 21' x 3'	6.40 m x 6.40 m x 0.90 m
10,000	37,854	21' x 23' x 3'	6.40 m x 7.00 m x 0.90 m
20,000	75,708	33' x 25' x 3.5'	10.10 m x 7.60 m x 1.07 m
30,000	113,562	36' x 32' x 3.5'	11.00 m x 9.75 m x 1.07 m
40,000	151,416	37' x 40' x 4'	11.30 m x 12.20 m x 1.20 m
50,000	189,271	42' x 43' x 4'	12.80 m x 13.10 m x 1.20 m
70,000	264,979	48' x 42' x 4'	14.60 m x 12.80 m x 1.20 m
80,000	302,833	77' x 30' x 5.5'	23.47 m x 9.10 m x 1.70 m
106,000	401,254	88' x 35' x 5.5'	26.80 m x 10.70 m x 1.70 m
125,000	473,176	58' x 59' x 5'	17.70 m x 18.00 m x 1.50 m
150,000	567,812	78' x 58' x 6'	23.77 m x 17.70 m x 1.80 m
210,000	794,936	75' x 73' x 6'	22.80 m x 22.25 m x 1.80 m

Please Note: Sizes are subject to change without notice. Contact a specialist for details.

Installation Procedure

Flexible tanks for diesel fuel storage feature an easy installation procedure that allows tanks to be filled and emptied on site. Any time you are storing fuel, having items like a ground liner or containment berm can help to keep fuel contained in the event of a spill. After your storage area has been cleared, tanks can then be filled. For more information regarding our installation procedure, please contact a tank product specialist.

Accessories

Ground Cloth | Covers | Underlayment | Additional Fittings | Repair Kits

For more complete information on GEI Works products and solutions, visit us on the Web at www.geiworks.com.

Phone: (+1) 772-646-0597 | info@geiworks.com

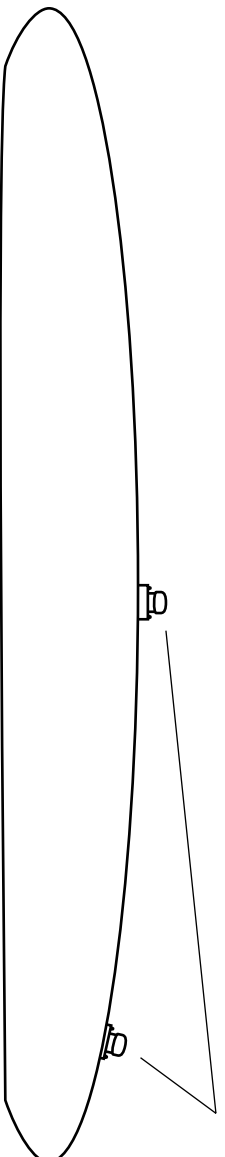
© 2018 GEI Works
All rights reserved
GEI Works terms and conditions apply.

All photos are representative only. Actual products may differ.

Materials and specifications are subject to change without notice. Featured products in photos may include additional equipment or accessories.

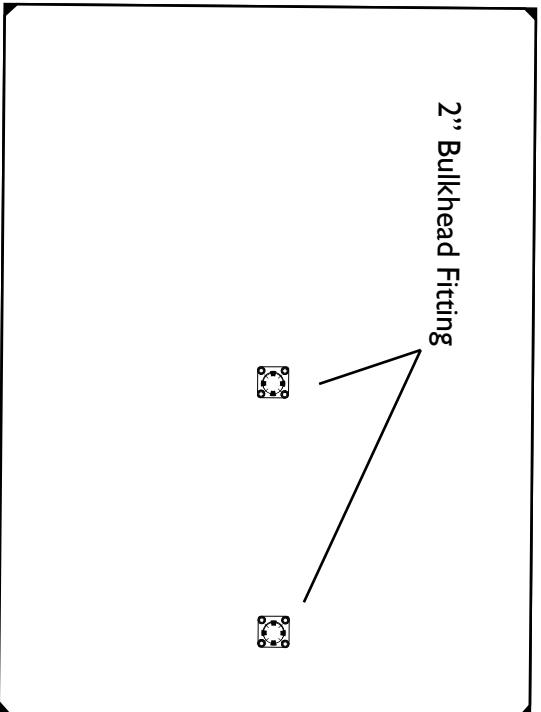
GEI Works, Mars, Taurus, Triton, Kraken, Orion, Helios, Centaur, Hydrostar and geiworks.com, their respective logos, product identity used herein, are trademarks of GEI Works and may not be used without permission.





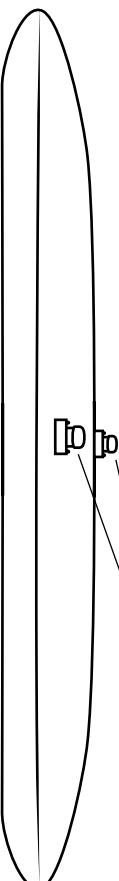
Side View*

2" Bulkhead Fitting



Top View*

2" Bulkhead Fitting



End View*

2" Bulkhead Fitting

*Drawings depict filled product.

Reference chart on previous page for dimensions.

Drawing for illustrative purposes only. Not to scale.



GEI
WORKS

Toll Free: 1.888.703.9889
Phone: (1+) 772.646.0597
info@GEIWorks.com | www.GEIWorks.com

Mars Flexible Storage Tank

Scale:	Drawing:	Revision:	Date:	By:
--------	----------	-----------	-------	-----